

Eduwork.Net

Project number: 609096-EPP-1-2019-1-IT-EPPKA3-VET-NETPAR

Work-based learning - taking a quality assured approach

The European Quality Assurance in Vocational Education and Training (EQAVET) 'Quality Assuring Work-based Learning' framework identifies a series of common themes, called Building Blocks', which have been used to establish and strengthen quality assurance processes in work-based-learning. The Building Blocks are designed to be useful for three main models of work-based-learning as follows:

- 1. Apprenticeship schemes which combine training in companies and vocational education and training providers (VET) or other education/training institutes;**
- 2. On-the-job training in companies which typically cover internships, work placements or traineeships which are a compulsory or optional element of VET programmes leading to formal qualifications;**
- 3. Integration into a school-based programme through on-site laboratories, workshops, kitchens, restaurants, junior or practice firms, simulations or real business/industry projects and assignments.**

Each building block includes:

- A 'call to action' and sets out activities that help to develop a quality assurance approach for work-based-learning.
- Identification of the 'key issues' that should be considered and the factors for success.
- Reference to the 'main message' drawn from an analysis of current practice based on recent experiences, suggesting new ways forward.

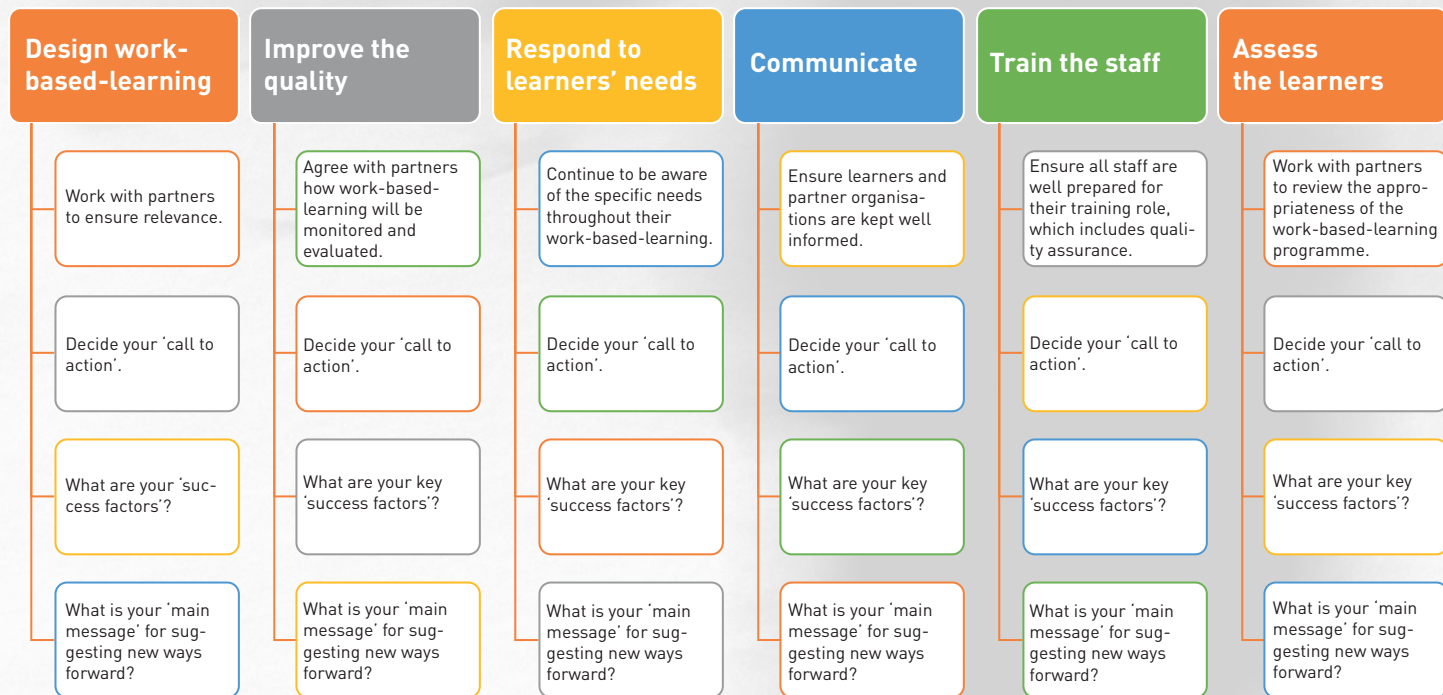
The European Commission's support for the production of this publication does not constitute an endorsement of the contents, which reflect the views only of the authors, and the Commission cannot be held responsible for any use which may be made of the information contained therein.



Co-funded by the
Erasmus+ Programme
of the European Union



Quality Assurance Building Blocks



For more information on Eduwork.Net see www.eduwork.net

RINOVA
innovate, create & regenerate

cece
Confederación Española de Centros de Enseñanza

CIOPS-FP
Centro Italiano Opere Femminili Salesiane
Formazione Professionale

FORMA
Associação Nacional das Formadoras Profissionais

A sociacija
LIETUVOS PROFESINIO MOKYMO ĮSTAIGŲ

ASSOLOMBARDA

CDETБ
An Evri Gkatechiki organo Ellinon Gkatechiki Ekpaideftiki Gketai
City of Public Education and Training Board

Confartigianato
Imprese
LOMBARDIA

idec

LŠMPS
LIETUVOS ŠVIETIMO IR MOKSLŲ PROFESINĖ SAJUNGA

MetropolisNet
European network of local development partnerships in metropolitan areas

ΠΑΝΕΛΛΗΝΙΑ ΕΝΩΣΗ ΔΙΕΥΘΥΝΤΩΝ ΔΗΜΟΣΙΩΝ ΙΝΣΤΙΤΟΥΤΩΝ ΕΠΑΓΓΕΛΜΑΤΙΚΗΣ ΚΑΤΑΡΤΙΣΗΣ
Π.Α.Ν.Ε.Δ.Δ.Ι.Ε.Κ.

VILNIAUS AUTOMECHANIKOS IR VERSLO MOKYKLA